



LOS PADRES TRAIL RIDERS LPTR NEWSLETTER

NOVEMBER 2018

BOARD OF DIRECTORS

PRESIDENT

Terri Jo Ortega
455-7109, tjortega2@gmail.com

VICE PRESIDENT

Ann Macy
448-3681, mike.macy@cox.net

SECRETARY

Karen Wheeler
452-9240, karenwheree@aol.com

TREASURER

Lou Dartanner
967-4859, boomerlou56@verizon.net

DIRECTORS-AT-LARGE

Carolyn Geiger
451-5578, carolyngeiger@cox.net

Barbara Hinman

(Ride Chair)
682-9966, tillymule@yahoo.com

Pam Kelly

967-6808, pamkellyk9@gmail.com

Nancy Moore

967-7587 and 452-7550

Sarah Pereverziev

(Membership Chair)
710-2217, jeserah@gmail.com

Pamela Webber

967-8105, pwebber@sbhotels.com

Barbara Wolf

(Parade Chair)
455-4113, sbremington@gmail.com

NEWSLETTER EDITOR

Meredith Klassen
(805) 895-6561,
girlinsilver@gmail.com



President's Message

Terri Jo Ortega

What's in your trail riding kit?

A good trail riding kit should reflect the type of riding that you do. Most of us may do several different types of riding, so you may not be able to have a "one size fits all" kit.



If you are sticking close to home in a familiar area, you may only need a "routine" ride kit with a few basic tools like a fully charged cell phone, a Swiss army knife, a hoof pick, a shoelace or

baling twine (for repairs to tack) and a whistle. I can whistle pretty loud using my fingers and I can't tell you how many times this has come in handy—but be sure to desensitize your horse to a whistle, if needed.

If you are trailering to a new place that is well-traveled by others and is accessible for potential rescuers, you may want to upgrade to an "exploratory" ride kit. In addition to the routine ride kit items, this kit includes an Easyboot (be sure it fits the horse you are riding), water, sunscreen, a plastic bag for warmth and protection from sudden showers

(again, be sure to desensitize your horse to the bag beforehand, if needed.)

The exploratory kit should also include first aid items for both horse and human—antiseptic, band aids, gauze pad, ibuprofen, duct tape, vet wrap, velcro, a protein bar and banamine.

I keep my kit on my saddle in a leather banana bag. (Continued on page 4)



IN THIS ISSUE...

- ◇ LPTR President's Message
- ◇ LPTR Calendar
- ◇ Upcoming Rides & Ride Info.
- ◇ Trail Ride Difficulty Rating Scale
- ◇ Upcoming Meeting Calendar
- ◇ Guest Speaker Introduction
- ◇ Holiday Celebration Invitation
- ◇ Upcoming Parades & Info.
- ◇ LPTR Parade Uniform Guidelines
- ◇ LPTR Member Spotlight
- ◇ LPTR Mission Statement
- ◇ Equine-Related Community Events
- ◇ LPTR Ride & Etiquette Rules
- ◇ LPTR 2019 Proposed Budget (Annual)
- ◇ Animal Non-Profits & Emergency Svcs.
- ◇ LPTR New Member Application

LPTR CALENDAR

November 2018

Sun	Mon	Tue	Wed	Thu	Fri	Sat
				1	2	3
4	5	6	7	8	9	10
11	12	13	14	15 gen. meeting	16	17
18 ride	19	20	21	22	23	24
25	26	27	28	29	30	

December 2018

Sun	Mon	Tue	Wed	Thu	Fri	Sat
						1
2	3	4	5 Party	6	7	8 parade
9	10	11	12	13	14	15
16	17	18	19	20	21	22
23/30	24/31	25	26	27	28	29

UPCOMING RIDE INFORMATION

November 18, 2018: UPDATE! The location of the November 18, 2018 ride has been changed to a ride along the Gaviota coast. This will be a 2-hour ride with hills. You will be treated to a beautiful view of the ocean. Arrive at 9:30AM and ride out at 10AM. **Ride Rating #3.** Bring a lunch to enjoy after the ride. RSVP to Barbara Hinman at (805) 682-9966.

Update on Baron Ranch Trail on Gaviota Coast

By Otis Calef, President,
SB County Trails Council

Trail riders won't have to be patient much longer! On October 16, 2018, the Santa Barbara Board of Supervisors approved a new bridge on Baron Ranch across Arroyo Quemado Creek on the Gaviota coast.

The bridge will open the way for the new trail from the trail head, turn-around off of 101 to Camino Cielo at the top of the mountain just west

of the Reagan Ranch. It would be pretty hard to overstate the benefits of this wonderful new riding area to the equestrian community.

Third District Supervisor, Joan Hartman, has been invaluable to move this project along. We have never had a greater equestrian and trail advocate. Joan and her husband, Jim, live in Buellton and have several horses.

An introduction to the new riding area was held in March, 2018 during a "Ride With the Supervisor" at Baron Ranch. Joan Hartman is now working to open the currently unused land for recreation.

Natalie and Brett Hodges have also been instrumental in getting this project off the ground and deserve many thanks for their efforts.

Bids for the Arroyo Quemado Creek bridge are already in and we are hoping the project will be completed by next summer. For more about this new trail, visit the Santa Barbara County Trails Council web site at www.sbtrails.org.

*Otis Calef,
President,
SB County Trails Council*



Baron Ranch (photo by Ron Williams)

LPTR Level of Difficulty Ride Rating Scale

Trail ride level of difficulty is based upon trail type, topography, steepness, soil type, and water encounters. A horse and rider's abilities and physical condition should also be considered. All rides are walking only.

RATING #1: Riding side by side, riding single file, flat terrain, Sand, ranch/dozer road, puddles.

RATING #2: Riding side by side, riding single file, rolling hills, sand, ranch/dozer road, ankle deep stream.

RATING #3: Riding single file, rolling hills, gradual climbing, deep sand, ranch/dozer road, ankle deep stream, rocks/gravel/shale, narrow ridge/canyon.

RATING #4: Riding single file, gradual climbing, mountainous, ankle deep stream, rocks/gravel/shale, narrow ridge/canyon, knee deep river.

RATING #5: Riding single file, mountainous, rocks/gravel/shale, narrow ridge/canyon, knee deep river.

LPTR Meetings

November 15, 2018 @ 6:30PM General Meeting

Documentary film producer John McDonald is our guest speaker at the LPTR General Meeting this coming Thursday, November 15, 2018 at 6:30PM.

John has presented to the LPTR group before and is returning to update us on his film project titled "Mule: Living on the Outside." Please mark your calendars for this special event. For more about the filmmaker on this website: mcdonaldproductions.com.



About General Meeting Guest Speaker, John McDonald

“John McDonald, Producer/Director/Cinematographer, has been a filmmaker for 35 years. John is a member of the Directors Guild of America and the International Documentary Association, and received a degree in Cinema from USC.

John’s films include Cotton Eyed Joe, a globally recognized documentary that made the Oscar’s shortlist, and the Oscar nominated short documentary, SQUIRES of San Quentin. His other works include The Ghost Mountain Experiment, Pipes & Sticks on Route 66 and On The Day, which was shot in Scotland, Canada, and the U.S.

John’s current film “Mule: Living on the Outside” follows John Sears, aka Mule, who has been roaming the western United States with his three mules for thirty years, seeking a balance between the man-made and the natural worlds.

The aged man and his animals sleep outside every day, moving from place to place as they please. While many appreciate Mule’s nomadic lifestyle and applaud his courage, he’s not welcomed everywhere. The feature-length documentary takes an intimate look at an intriguing, but controversial character, his unique experiences and adventures, and his urgent message for contemporary society.

Regardless of how we personally feel about Mule, the issues he raises concern all of us: preserving open space and connecting communities together by multi-use trails, individual freedom of movement and access to public land, and the system’s treatment of people living outside society’s norms.” ~3mulesmovie.com

LPTR Holiday Celebration

You are Invited!

Annual LPTR Holiday Celebration
December 5, 2018 at 5:30 PM

Pam Webber's home
4629 Via Roblada, Santa Barbara, CA 93110
(Hope Ranch)

Please RSVP to Barbara Hinman at 682-9966 and let her know what dish you will bring to the party. Looking forward to seeing you for this nice evening and fun event.

LPTR General Meeting information

LPTR General Meetings are held at 6:30PM on the **3rd Thursday of every odd-numbered month** at the SB Humane Society Educational Center on Overpass Road.

Refreshments provided. Meet & greet at 6:30PM. General meeting starts at 7:00 PM. To minimize disruptions during speaker presentations and to ensure the safety and enjoyment of the membership, please do not bring dogs or other animals to the meetings.



LPTR Parade Information

Upcoming Parades

By Barbara Wolf

SATURDAY, DECEMBER 8, 2018

Solvang Christmas Parade

This is a fun parade and a good first timer parade. We will get ready at the Old Mission in the dirt lot next to the Mission. We will decorate our horses in Christmas attire and wear our LPTR outfits for this parade, along with a Santa hat.



Please RSVP by
November 30, 2018 to
 Barbara Wolf
 by phone or by text at
 (805) 455-4113

LPTR Parade Uniform Guidelines

- * BOOTS.
- * DARK BLUE JEANS & DARK BLUE DENIM VEST.
- * WHITE LONG-SLEEVE SHIRT WITH CLUB PATCH ON LEFT SLEEVE.
- * RED BANDANA TIED AROUND NECK.
- * NEUTRAL COLORED FELT OR STRAW HAT OR HELMET.
- * RED, BLUE, OR WHITE FELT SADDLE BLANKET.
- * SADDLE, BRIDLE (BRING A SPARE)
- * DECORATIONS BASED ON EACH PARADE THEME.
- * CLEAN TACK AND HORSE.



President's Message (continued from page 1)

(continued from page 1)

I also have a small leather case that a friend made me to keep some of the smaller human items in so I can find them easily while I'm on the trail and someone needs something.

Finally, I carry an item called "The Friendly Swede". It is a woven piece of paracord that will hold 350 lbs and it is on a clip that easily attaches to the D ring on my saddle.

Regardless of which type of ride you are on, be sure to always let someone know where you plan to ride and about how long you are going to be gone.

Hopefully you will never need most of these items while you're out on the trail but if you pack a ride kit on your saddle, at least you will be prepared if you do. Hope to see you on the trail.

~TJ Ortega



LPTR Member Spotlight

By Lynne Sherman

Karen Blumenshine, DVM, has been an LPTR member for 27 years. Many of us know her through her equine veterinary practice. But Karen has been “up” to something unusual for the past 25 years. Literally “up”.

Karen assists in flying racehorses to Japan! Being the onboard veterinarian for potential world-class equine athletes takes nerve, a special skill set, and a willingness to do the humble chores of being equine flight attendant to a planeload of pricey, nervous horses.

A typical trip requires Karen to fly to Chicago to receive the equine passengers, which have just come out of weeks of quarantine and have been trucked in special horse trailers to Chicago from Kentucky. Karen immediately examines each horse, screening out any who may have become unhealthy. On a recent trip, Karen found one horse who arrived with a normal temperature but after the flight was delayed due to a hurricane, she discovered the horse had a temperature of over 103 the very next morning!

A thorough knowledge of Japanese rules guided her decision to dose the horse with antibiotics and send him back to Kentucky for more quarantine. Had the flight not been delayed, the horse would have arrived in Japan, sick, and not allowed to receive antibiotics. What would be a minor course illness and treat-

ment in the USA could have devolved into a long iffy recovery in Japan.

the flight. The quarters are close, and the watering requires the steward, or Karen, to enter the box stall to hold the bucket while the horse drinks. “You have to be able to move quickly out of the way” says Karen.

What happens to these horses when their racing days are over? Some find careers as jumpers or in dressage but others are not as lucky. Seeing the need for a horse sanctuary in Japan, Karen joined the board of directors of RE-BORN Minamisoma Equestrian Park, a project to rescue these horses—and where horses can help rescue the town of Minamisoma.

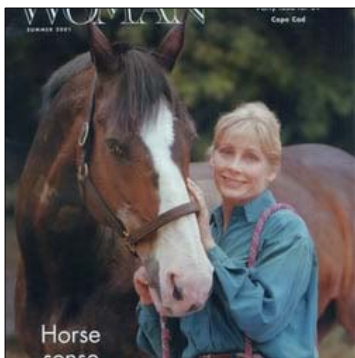
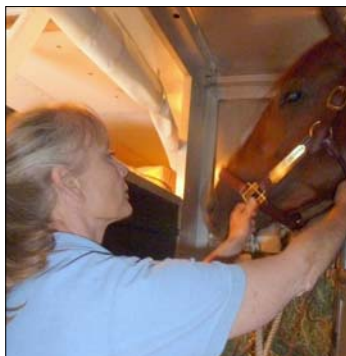
Minamisoma is approximately the size of our Santa Ynez Valley and is located near the Fukushima nuclear disaster. After the disaster, the town was deemed radioactive and was excavated to a depth of 18” to decontaminate it. The town is no longer radioactive but the stigma remained. No one would buy the agricultural produce so jobs dried up and people left.

Today, seven years after the devastating tsunami, public and private funds are building a state of the art sanctuary for horses and a five star tourist destination in Miniamisoma for people who seek to find peace by spending time in vistas filled with horses. The building projects have already brought new life and new hope to the town, and to the horses of Japan. Karen is the American veterinarian advising the project.



Dr. Karen Blumenshine tends to a horse on a recent flight to Japan

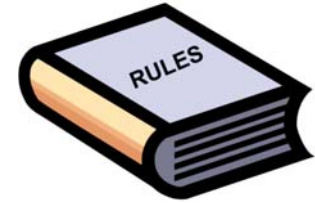
Once the horses are loaded into their rolling box stalls, they are lifted into the plane by a scissors forklift. That could be a million dollar horse in that skybox! Due to turbulence, there are no automatic waterers in the box stalls. The horses need to be hand watered. That means carrying a heavy water bucket to each horse three times during



LPTR MISSION STATEMENT

- To advance recreational trails and trail use and to encourage horseback riding, trail riding, and other horse-related activities in Santa Barbara County.
- To foster good horsemanship and fellowship.
- To promote mutual helpfulness between horse owners and property owners near trails and riding areas.
- To initiate, sponsor, promote, and carry out plans, policies, and activities that will tend to further the use, acquisition, preservation, development, and maintenance of riding and hiking trails, especially in the County of Santa Barbara.
- To provide educational events to the equestrian community.

LPTR Trail Rules



- The trail boss is always in charge. His/Her instructions are to be followed at all times.
- Keep your horse quiet if you are mounted and others are not.
- Never pass the trail boss (or his/her designee) unless you have received permission to do so. The trail boss or designee always rides in front of the group.
- Never fall behind the drag rider. The drag rider has the responsibility of being the last rider in the group.
- Saddles must be used on organized trail rides. Check all tack

carefully before starting on a ride.

- A halter and lead rope are required tack. These must be carried if you intend to tie your horse during the ride, and should be carried in case you need to lead your horse.
- There will be no dogs allowed on organized trail rides.
- There will be no alcohol consumed by riders before or during an organized ride.
- There will be no smoking at any time except in areas designated by the trail boss. All riders will strictly adhere to prop-

erty owners' requests regarding smoking.

- No person shall bother any livestock encountered along or adjacent to the trail.
- Horses that have been known to kick must wear a red ribbon on the tail, and ride at the rear of the group.
- Stallions may participate only with the prior approval of the Ride Chair or trail boss.

LPTR Trail Etiquette

- Do not crowd on the trail; leave about one horse length between horses.
- Allow fast walking horses to pass where it is safe to do so. Ask to pass and let other riders know if you will be passing on the right or left. Slower horses should stay at the rear of the group.
- If allowed to proceed faster than a walk, state your intention to move out and pass other horses at a safe distance. Never speed



past horses in front of you.

- Horses with behavioral problems must ride at the rear of the group.
- Do not litter trails with trash of any kind. If you bring it in, pack it out.
- Call back any trail hazards, such as "hole on the left," or "low branches ahead."
- Do not hold onto brush or branches as you go through them, as they may snap back and hit the horse or rider behind you.
- Take care of the trail by staying on it. Do not take short cuts.
- Always respect the property owner's rights. Respect their privacy and any signs posted.
- Walk when going up or down

hills. Leave extra space between horses.

- When watering your horse, allow him to drink, but not linger, to give others a chance to water also. Do not leave the area until all horses have had an opportunity to drink and the group is ready to move on.
- When riding along a paved road, always ride with the traffic. Ride on the dirt shoulder if there is one.
- When crossing a vehicle road, line up horizontally and walk across all at one time. On busy streets, designate two riders as flag people.
- When passing through a gate, move far enough ahead to allow all horses to pass through, then wait while the drag rider closes the gate and remounts.

Annual LPTR Proposed Budget (2019)

**LOS PADRES TRAIL RIDERS
PROPOSED BUDGET FOR 2019*
Lou Dartanner, Treasurer**

INCOME

Category	Proposed
Membership, Regular	\$ 2,000
Membership, Day	\$ 50
Tack & Tog Sale	\$ 2,000
Promotional Items (T-Shirts)	\$ 400
Donations	\$ 50
TOTAL	\$ 4,500

EXPENSES

Administration	
Liability Insurance	\$ 690
PO Box Rental	\$ 100
Non-Profit Expenses	\$ 100
Web Site Expenses	\$ 150
Postage & Supplies	\$ 150
Misc. (Flowers, Gifts)	\$ 100
Operations	
Parades	\$ 300
Rides & Campouts	\$ 500
Play Day	\$ 300
Miscellaneous	\$ 100
Newsletter	\$ 50
Membership	
Supplies/Printing	\$ 190
Postage	\$ 150
Tack & Tog Sale	
Advertising	\$ 200
Facilities Rental	\$ 300
Food	\$ 250
Programs (Meetings)	
Room Rental	\$ 210
Speakers/Clinics	\$ 300
Food Drinks	\$ 200
Promotional Items (T-Shirts, etc.)	\$ 160
TOTAL EXPENSES	\$ 4,500

***NOTES:**

The Final Budget will be approved by the 2019 Board of Directors.

Grants are not included in the budget; they will be funded from the equity in our checking account with the amount designated by the Board.

This Proposed Budget and the Year-to-Date Profit & Loss Statement and Balance Sheet will be posted at the LPTR Annual Meeting on November 15th.

The LPTR 2019 Proposed Budget and Year-to-Date Profit & Loss Statement and Balance Sheet will be posted at the November 15th, 2018 Annual Meeting.

Animal Non-Profits & Emergency Services

Revised 6/2018

SANTA BARBARA EQUINE ASSISTANCE AND EVACUATION TEAM:

Help keep Equine Evac going! Members and volunteers greatly needed to keep EVAC going. For information, contact Equine EVAC at 892-4484. In emergency, Call 9-1-1 to activate for personal assistance. Equine Evac is activated through Santa Barbara County Animal Services during a disaster and works closely with Animal Services to evacuate and provide care for evacuated livestock.



Animal Emergency Services

SANTA BARBARA EMERGENCY RESPONSE TEAM:

Works through the Santa Barbara County Animal Services during a disaster. See www.sbcphd.org/as.

SANTA BARBARA HUMANE SOCIETY:

Sponsors a Technical Animal Rescue and Emergency Response Team comprised of trained volunteers and professionals that respond to incidents requiring special equipment and techniques to rescue animals in emergency scenarios. Activated during natural disasters via the **SB County Animal Services Hotline at (805) 681-4332** to evacuate large animals. Contact Tim Collins at (805) 964-4777 ext.105. www.sbhumaneociety.org. Emergency Animal Rescue Team Hotline number is (805) 330-3330.

SANTA BARBARA COUNTY ANIMAL SERVICES EMERGENCY HOTLINE:

Santa Barbara County Animal Services is the lead agency for disaster response for Santa Barbara County. They coordinate all aspects of animal evacuations including rescue, sheltering, and shelter in place support. Animal Services is activated by the incident command. The Animal Services hotline is (805) 681-4332. This hotline is only active during an emergency.

HEARTS THERAPEUTIC EQUESTRAIN CENTER:

Equine-assisted therapy. Call 964-1519 for information on lessons, volunteering, or to make donations or visit their website at www.heartsriding.org. Volunteers Orientation held monthly (see web site). Open house monthly; see web site for dates. The Tack Shack sells gently used tack and togs.

WILDLIFE CARE NETWORK:

(805) 681-1080. For emergencies involving small animals and birds in distress.

EQUINE-RELATED CLASSIFIEDS

FREE CLASSIFIEDS

Free classified advertisements for LPTR members. Ads run for two consecutive months. To place, cancel or renew an ad, send an email request to the newsletter editor at girlinsilver@gmail.com. Ads must be received by the 15th of the month to be published in the next newsletter. Please note that all ads are subject to board approval and editing.

LPTR T-Shirt Sale

Support Your LPTR! LPTR has club t-shirts for sale. The short sleeved, crew neck t-shirts are made of hearty 100% cotton and are available in unisex sizes of medium, large, extra-large, and 2-XL. T-shirts are \$15 each and come in 2 colors—tan or slate blue. Limited quantities are available so grab yours soon. To get your t-shirt, contact Ann Macy at mike.macy@cox.net or 805-448-3681.



LOS PADRES TRAIL RIDERS ~ MEMBERSHIP APPLICATION

PLEASE BE SURE TO SIGN THE GENERAL RELEASE AT THE BOTTOM.

The purpose of the Los Padres Trail Riders (LPTR) is to promote individual and family trail riding, to preserve and maintain County trails, to hold social events for the local horse community, and to present educational meetings and seminars, and to conduct fundraisers for local equine-related non-profits. You do not have to be a trail rider or even to be a horse owner to be a member of LPTR. This form must be used for new members or those joining after an absence. It may also be used for renewals.

PLEASE PRINT CLEARLY

Name (last) _____ (first) _____ Spouse (family membership) _____

Street Address _____ City _____ ZIP _____

Home Phone _____ Cell Phone _____ Email _____

NOTIFY IN EMERGENCY: Name: _____ Phone: _____

Number and Types/Breeds of Horses/Mules Owned: _____

TYPE OF MEMBERSHIP (circle one): NEW RENEWAL

\$25.00 Adult Membership (Individual 18 & over) \$35.00 Family Membership (Spouse and/or children)

\$20.00 Junior Membership (17 & under if joining alone) \$10.00 Individual Day Membership (one day only)

If Family Membership, please list name(s) of children under 17 years of age:

1. _____ 2. _____ 3. _____

How would you like to receive reminders of LPTR and community events:

(circle one): PHONE E-MAIL NO CONTACT



GENERAL RELEASE

I, the undersigned member of Los Padres Trail Riders (the "Club"), acknowledges that horseback riding and related activities, including being a spectator at horse events, involves certain risks of injury to me personally, to my minor child(ren), damage to my personal property, and injury or death to my horse caused by my own negligence or the negligence of others. Knowing these facts, I nevertheless waive, release, and discharge the Club, its Board of Directors collectively and individually, officers, employees, and all individual members of the Club, their representatives, heirs, executors, administrators and assigns from any kind or nature that might occur as a result of or arising from my participation, including as a spectator, as a member of the Club, including but not limited to, participation at a Club meeting, Club horse show, Club trail ride, Club equine demonstration lecture, or any other event sponsored or managed by the Club or a member thereof on behalf of the Club. This General Release is being given in consideration of the Club enrolling me and /or members of my family as a member of the Club. I further agree that I will defend, indemnify and hold harmless the Club, its Board of Directors, both collectively and individually, its officers and employees and all individual members of the Club, their representatives, heirs, executors, administrators and assigns from any and all claims, demands, causes of action or other proceedings brought by, or prosecuted for my benefit, alleging arising out of the negligence of the Club, its Board of Directors, collectively and individually, its officers and employees and all individual members of the Club. I expressly waive any benefits I may have under Section 1542 of the California Civil Code relating to the release of unknown claims. That section provides as follows: CERTAIN CLAIMS NOT AFFECTED BY GENERAL RELEASE – A general release does not extend to claims which the creditor does not know or suspect to exist in his favor at the time of executing the release, which if known by him must have materially affected his settlement with the debtor," are hereby expressly waived.

Executed this _____ day of _____, 20__ at _____, California.

Signature on behalf of themselves and minor child(ren)

Signature of Spouse (if applicable)

Please make checks payable to Los Padres Trail Riders and send to LPTR Membership, PO Box 61845, Santa Barbara, CA 93160.

4/2/2018 Previous editions are obsolete and should not be used

LPTR RULES 2018-19

SECTION 6: L.P.T.R. SPONSORED ACTIVITIES & RULES

- 1) **The LPTR will sponsor a Tack & Tog Sale each year as its principal fund-raising activity. The Board will specify the date, time, place, prices, and other details of the sale, to be published in the Tack & Tog Sale flyer. Said flyer will become part of these Standing Rules.**
- 2) **The LPTR will sponsor other events, such as a Play Day, as approved by the Board, who will specify the details of such event and appoint a Chair to manage it.**
- 3) **The following Parade Rules will be published and distributed to all members in a manner approved by the board.**
 - a) The mandatory outfit for all parades (except Fiesta) is: boots, dark blue jeans, white long-sleeve shirt with the Club patch on the left sleeve, dark blue denim vest, red bandana, and western hat (straw or neutral-colored) or a helmet.
 - b) All riders must be paid members. Guests are not allowed in any parade.
 - c) A responsible adult must accompany any rider under 18 years of age.
 - d) Each rider must be competent to control his/her horse and remain alert for potential problems.
 - e) No horse can be on a lead line. No horse or rider may tow or pull anything without prior approval of the Parade Chair.
 - f) Horses must present a good image by being well groomed and clean. Tack must be clean to enhance the horse's image.
 - g) Your horse's gear must include mechanical hackamore or bit, etc., in order to ensure the safety of other riders, horses, and spectators.
 - h) Stallions may participate only with prior approval of the Parade Chair.
 - i) No alcohol use before or during any parade.
 - j) Any questions regarding parade procedures shall be directed to the Parade Chair. His/Her instructions are to be followed at all times.
 - k) All participants must RSVP to the Parade Chair for each parade.
 - l) Each participant must notify the Parade Chair promptly upon arrival on parade day. Be on time for the line-up.
 - m) Horses that kick must wear a red ribbon in their tails and ride at the end of the group.
 - n) Participants must stay in formation, as described by the Parade Chair, throughout the parade.
 - o) Do not throw objects such as candy or flowers into the crowd.
 - p) A horse and rider must qualify in at least one parade prior to participating in the Fiesta Parade. Completing five consecutive Fiesta Parades with the same horse and rider with LPTR shall waive the annual parade qualifying.
 - q) Certain parade may have special rules in addition to the list above and will be announced in the Parade Chair prior to the beginning of such parades.
- 4) **The following Trail Rules will be published and distributed to all members in a manner approved by the board:**
 - a) The trail boss is always in charge. His/Her instructions are to be followed at all times.
 - b) Keep your horse quiet if you are mounted and others are not.
 - c) Never pass the trail boss (or his/her designee) unless you have received permission to do so. The trail boss or designee always rides in front of the group.
 - d) Never fall behind the drag rider. The drag rider has the responsibility of being the last rider in the group.
 - e) Saddles must be used on organized trail rides. Check all tack carefully before starting on a ride.
 - f) A halter and lead rope are required tack. These must be carried if you intend to tie your horse during the ride, and should be carried in case you need to lead your horse.
 - g) There will be no dogs allowed on organized trail rides.
 - h) There will be no alcohol consumed by riders before or during an organized ride.
 - i) There will be no smoking at any time except in areas designated by the trail boss. All riders will strictly adhere to property owners' requests regarding smoking.
 - j) No person shall bother any livestock encountered along or adjacent to the trail.
 - k) Horses that have been known to kick must wear a red ribbon on the tail, and ride at the rear of the group.
 - l) Stallions may participate only with the prior approval of the Ride Chair or trail boss.
- 5) **The following trail etiquette will be published and distributed to all members in a manner approved by the board.**
 - a) Do not crowd on the trail; leave about one horse length between horses.
 - b) Allow fast walking horses to pass where it is safe to do so. Ask to pass and let other riders know if you will be passing on the right or left. Slower horses should stay at the rear of the group.
 - c) If allowed to proceed faster than a walk, state your intention to move out and pass other horses at a safe distance. Never speed past horses in front of you.
 - d) Horses with behavioral problems must ride at the rear of the group.

LPTR RULES 2018-19 (con't)

- e) Do not litter trails with trash of any kind. If you bring it in, pack it out.
 - f) Call back any trail hazards, such as “hole on the left,” or “low branches ahead.”
 - g) Do not hold onto brush or branches as you go through them, as they may snap back and hit the horse or rider behind you.
 - h) Take care of the trail by staying on it. Do not take short cuts.
 - i) Always respect the property owner’s rights. Respect their privacy and any signs posted.
 - j) Walk when going up or down hills. Leave extra space between horses.
 - k) When watering your horse, allow him to drink, but not linger, to give others a chance to water also. Do not leave the area until all horses have had an opportunity to drink and the group is ready to move on.
 - l) When riding along a paved road, always ride with the traffic. Ride on the dirt shoulder if there is one.
 - m) When crossing a vehicle road, line up horizontally and walk across all at one time. On busy streets, designate two riders as flag people.
 - n) When passing through a gate, move far enough ahead to allow all horses to pass through, then wait while the drag rider closes the gate and remounts.
- 6) **The following Ride Rating Scale (Level of Difficulty) will be published and distributed to all members in a manner approved by the board:**
- a) Rating #1: Riding side by side, riding single file, flat terrain, sand, ranch/dozer road, puddles.
 - b) Rating #2: Riding side by side, riding single file, rolling hills, sand, ranch/dozer road, ankle-deep stream.
 - c) Rating #3: Riding single file, rolling hills, gradual climbing, deep sand, ranch/dozer road, ankle-deep stream, rocks/gravel/shale, narrow ridge/canyon.
 - d) Rating #4: Riding single file, gradual climbing, mountainous, ankle-deep stream, rocks/gravel/shale, narrow ridge/canyon, knee-deep river.
 - e) Rating #5: Riding single file, mountainous, rocks/gravel/shale, narrow ridge/canyon, knee-deep river.
- 7) **Smoking will not be permitted at any LPTR activity held on property or grounds where it is prohibited, nor shall it be permitted on any trail ride activity.**